

Blue Skies

Arr: C. Hine
December 8, 2004

INTRO *freely*

8

Blue skies (blue skies) are com - in' my way it's gon - na be a

6 7 8 9 10

(what a day!) *tempo* blue skies jus'

won - der - ful day blue skies smil - in' at

(what a day!) blue skies jus'

11 12 13 14 15

smil - in' at me

me noth - in' but blue skies do I see I

smil - in' at me blue skies do I

16 17 18 19 20

blue birds all sing - in' a song

see and blue birds sing - in' a song noth - in' but

blue birds all sing - in' a song

Blue Skies

21 22 23 24 25

blue birds all day long ne-ver saw the sun

a

26 27 28 29

shin-in' so bright ne-ver saw things go-in' so right no-tic-in' the day

I jus' go

30 31 32 33

hur-ry-in' by when you're in love my my how they fly

when you're how they fly there's

34 35 36 37

blue skies smil-in' at me noth-in' but

blue skies smil-in' at me

Blue Skies

blue skies blue skies do I see an' blue birds

do I see

Measure numbers: 38, 39, 40, 41, 42

sing-in' a song

birds just sing - in' a song noth - in' but blue birds all day

Measure numbers: 43, 44, 45, 46, 47

long day long

ne - ver saw the sun
< snap on 2 & 4

shin - in' so bright

Measure numbers: 48, 49, 50, 51

go - in' so right

ne - ver saw things

no - ti - cin' the day hur - ry - in' by

jus' go when

Measure numbers: 52, 53, 54, 55

Blue Skies

56 57 58 59 60

when you're in love my my how they fly an fly oh blue days

you're an fly

Detailed description: This block contains the first system of the musical score, measures 56 through 60. It features a grand staff with treble and bass clefs. The melody is in the treble clef, and the accompaniment is in the bass clef. The key signature has one sharp (F#). The lyrics are: "when you're in love my my how they fly an fly oh blue days" on the top line and "you're an fly" on the bottom line.

61 62 63 64 65

all o' them gone noth' - in but blue skies from now

they're gone

Detailed description: This block contains the second system of the musical score, measures 61 through 65. The melody continues in the treble clef, and the accompaniment is in the bass clef. The key signature changes to two flats (Bb). The lyrics are: "all o' them gone noth' - in but blue skies from now" on the top line and "they're gone" on the bottom line.

66 67 68 69 70

on noth' - in but blue skies blue skies

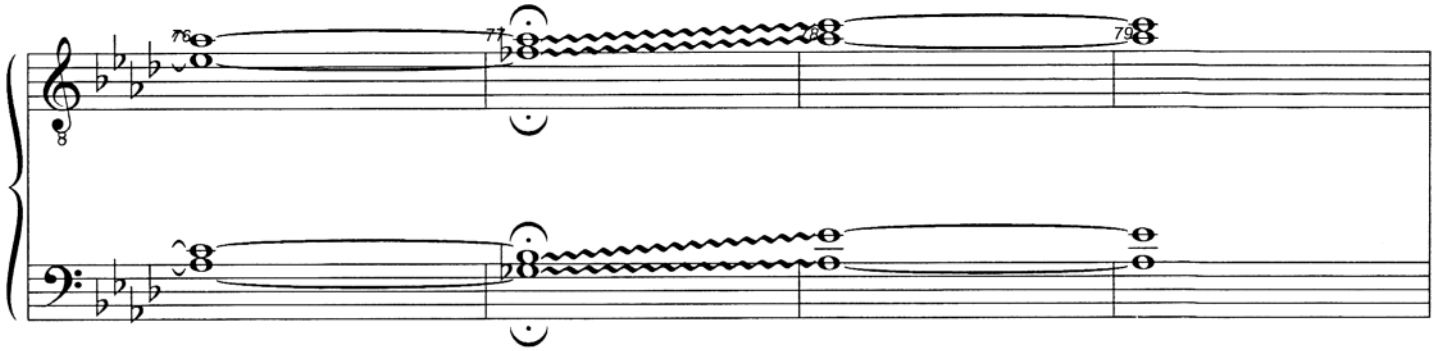
from now on

Detailed description: This block contains the third system of the musical score, measures 66 through 70. The melody continues in the treble clef, and the accompaniment is in the bass clef. The key signature remains two flats (Bb). The lyrics are: "on noth' - in but blue skies blue skies" on the top line and "from now on" on the bottom line.

71 72 73 74

from now on from now on there's blue skies from now on

Detailed description: This block contains the fourth system of the musical score, measures 71 through 74. The melody continues in the treble clef, and the accompaniment is in the bass clef. The key signature remains two flats (Bb). The lyrics are: "from now on from now on there's blue skies from now on" on the top line and "from now on" on the bottom line.



Blue Skies

Words & Music by Irving Berlin

Copyright © 1927 by Irving Berlin (Renewed)

This arrangement © 1998 by the Estate of Irving Berlin

International Copyright Secured. All Rights Reserved. Arranged by Permission.

"Blue Skies" is a trademark of the Estate of Irving Berlin.

The arrangement was cleared on March 9, 1998.